



ARRL FIELD DAY 101





Time to start gearing up for Field Day 2023!

- June 24th – 25th, 2023
 - Always the 4th full weekend in June



Field Day 101

- Purpose of Field Day
- Basic Rules
- The Contact Exchange
- Scoring
- Station Setup
- Strategies





Field Day Purpose

- Social gathering
 - We like to eat!
 - Camaraderie and friendship
- Emergency Preparedness
 - Training ourselves
 - Demonstrate emergency preparedness to public, government and served agencies
 - Experimentation with antennas, portable equipment and unusual power sources





Field Day Purpose (cont.)

- Chance to try out new/different equipment
- Knowledge building
- Recruiting new hams and potential members
- Challenge of operating in abnormal situations and less-than-ideal conditions
- Competition
- **FOOD AND FUN!**





Objective of Field Day

- To work as many stations as possible on any and all amateur bands (excluding the 60, 30, 17, and 12-meter bands – no repeaters) and to learn to operate in abnormal situations, in less-than-optimal conditions.
- Field Day is open to all amateurs in the areas covered by the ARRL/RAC Field Organizations, and countries within IARU Region 2
- DX stations residing in other regions may be contacted for credit but are not eligible to submit entries.



Motivation

- Many hams profess no interest in operating radio on Field Day, but in reality, they're reluctant to participate because of:
 - “Mic Fright” (or “Key Fright”)
 - Unfamiliar with radio procedures in general
 - No experience on HF
 - “Don't like contests”



So...

- What's your excuse?
 - You don't have to be a "super-ham" to operate Field Day
 - We're here to help you out. Don't be afraid to ask.
 - You can "play" as little or as much you'd like



WHO CAN OPERATE FIELD DAY?

- ANYONE
 - LICENCED HAMS CAN OPERATE ON THEIR OWN UNDER THE NORMAL RESTRICTIONS OF THEIR LICENSE, OR ON UNDER THE PERMISSIONS OF A CONTROL OPERATOR
 - NEWLY-LICENSED OR NON-LICENSED PEOPLE ARE ENCOURAGE TO OPERATE THE GOTA STATION





What are we trying to accomplish?

- Contact as many other stations as possible
- On any and all amateur bands (excluding the 60, 30, 17, and 12 meter bands)
- And in doing so, to learn to operate in abnormal situations in less-than-optimal conditions.
- A premium is placed on:
 - developing skills to meet the challenges of emergency preparedness
 - acquainting the general public with the capabilities of Amateur Radio



Field Day Entry Categories

- Are based on:
 - Number of transmitters
 - Total number of transmitters operating on Voice (SSB, AM, FM), CW (Morse Code) and Digital Modes
 - The Get On The Air (GOTA) station, along with a VHF/UHF station, do not count toward this number
 - Where the Station is located
 - In the “field”, at home, at an EOC, mobile, etc.
 - How Transmitters are powered
 - Emergency Power (Generators), Batteries, Solar, etc.



OUR OPERATION

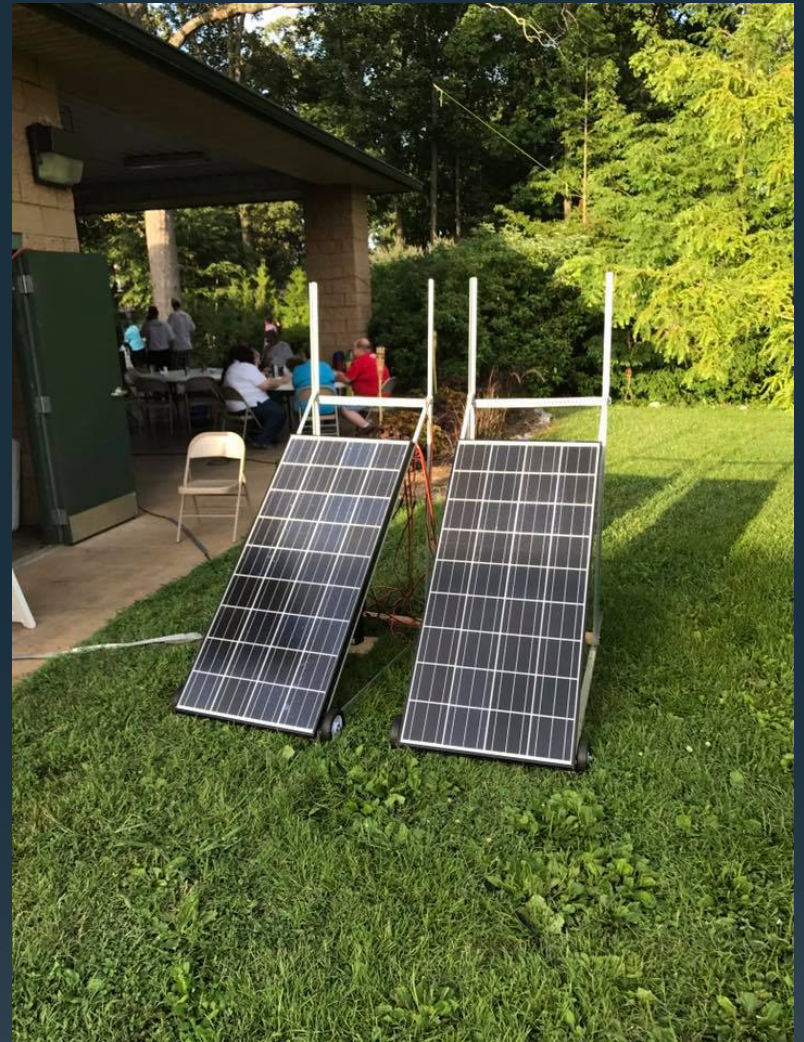
- We generally set up on Saturday morning around 8:00 am, go through the night and then break down sometime on Sunday around 1:00 pm.
- We will operate 3 HF stations (CW, Phone and Digital). CW as long as we have ops then maybe digital.
- New this year is a VHF station, which is being used as part of our educational activity. This station is also available to use throughout Field Day.





OUR OPERATION

- We operate primarily on generator power.
- We also use solar charged batteries for Natural power bonus.





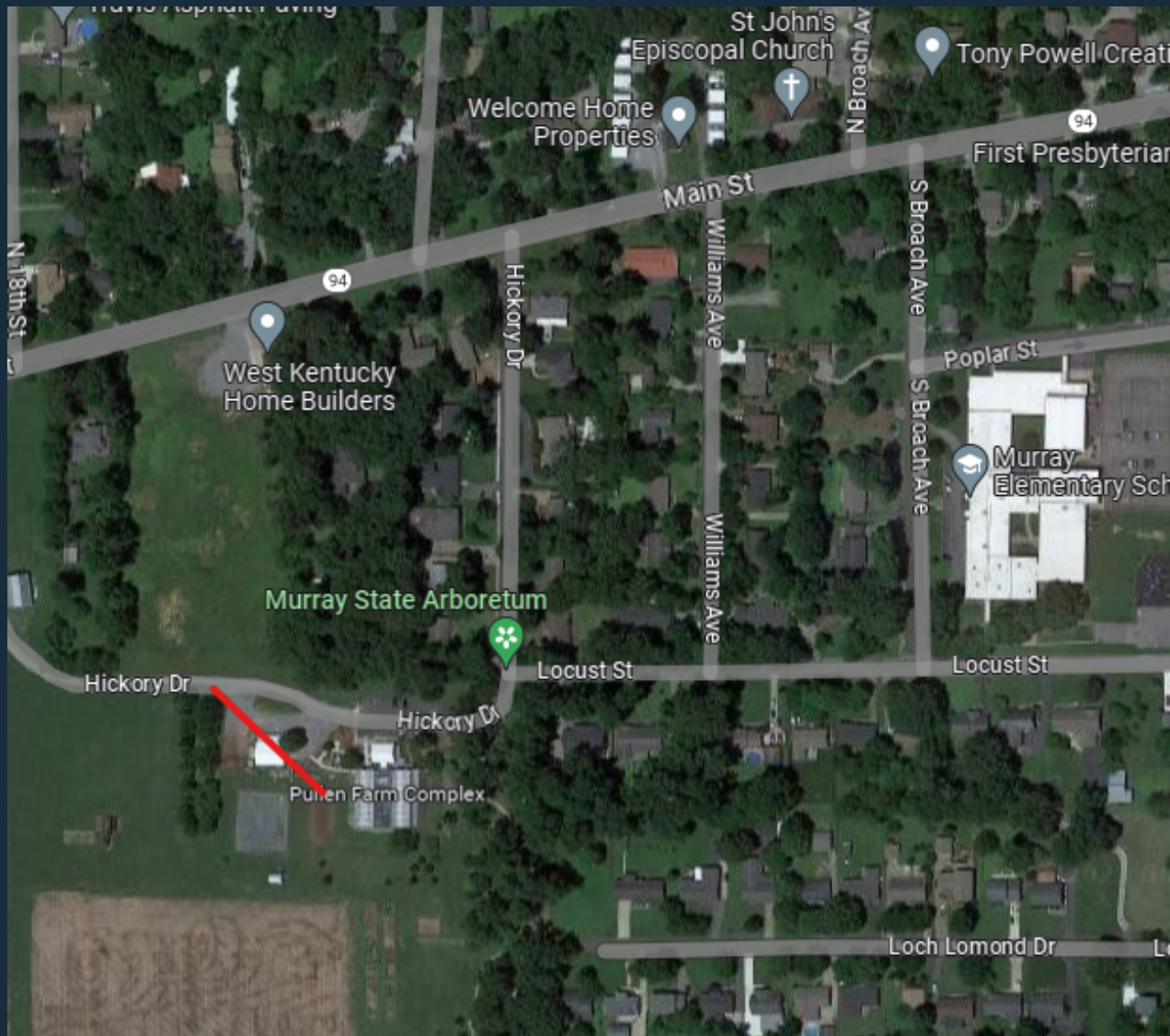
OUR OPERATION



Where are we operating
this year?



The Arboretum at Murray State





The Arboretum at Murray State





LOCATION, LOCATION, LOCATION

- Site used for past several field day operations
- Kitchen & restroom facilities on-site
- Lots of tall trees for hanging wire antennas
- Great partnership between MSU Arboretum & MSUARC
- Ample parking for participants as well as visitors





LOCATION, LOCATION, LOCATION

HOWEVER...



BE AWARE OF YOUR SURROUNDINGS...





THE BASIC RULES

- New Rules for 2023
 - All participants are limited to maximum 500 watts
 - Multi-channel streaming and automated operations are prohibited (digital modes)
 - GOTA contacts are now worth 5 points each (no limit per operator)
 - This could be a huge point boost!



Who Can Operate GOTA?

- Any amateur license within the last year regardless of license class
- Those considered a “generally inactive licensee”
- Non-license individuals may participate in this station, but only under the direct supervision of a properly licensed control operator





POINT VALUES

- Phone (voice), CW, and Digital are considered separate “bands”
- All voice contacts (SSB, FM, AM, satellite) are worth 1 point each
- All CW and digital contacts (PSK31, RTTY, FT-8 etc.) are worth 2 points each





CONTACTS

- Can only work each station once per band-mode:
 - For example, you can work the same station once on 20M phone, once on 20M CW, and once on 20M digital mode (total 5 points)
 - You can work the same station on other frequency bands and modes for additional points.



The Contact “Exchange”

- In order to make a valid contact, the information to be exchanged consists of:
 - Number of transmitters at your site (3 for example)
 - Class of operation
 - ARRL Section, State, Province or Part of State (KY for us)
- So, for us:
 - On CW – “3A KY”
 - On Phone – “Three Alpha Kilo Yankee”



Exchange must be accurate

- You must copy the information correctly from the other station AND...
- The other station must copy your information correctly, OR ELSE...
- It is not a valid contact and will be deducted from our final score



ARRL Section

- 71 US and 14 Canadian Sections
- Some states/provinces are divided into multiple sections:
 - FL is 3 sections (NFL, WCF and SFL)
 - Massachusetts is 2, Eastern and Western (EMA & WMA)
 - New Jersey is 2 sections, Northern and Southern
 - Texas is 3 sections
 - Ontario is now 3 sections
 - New York is 4 sections
 - California is 6, etc.

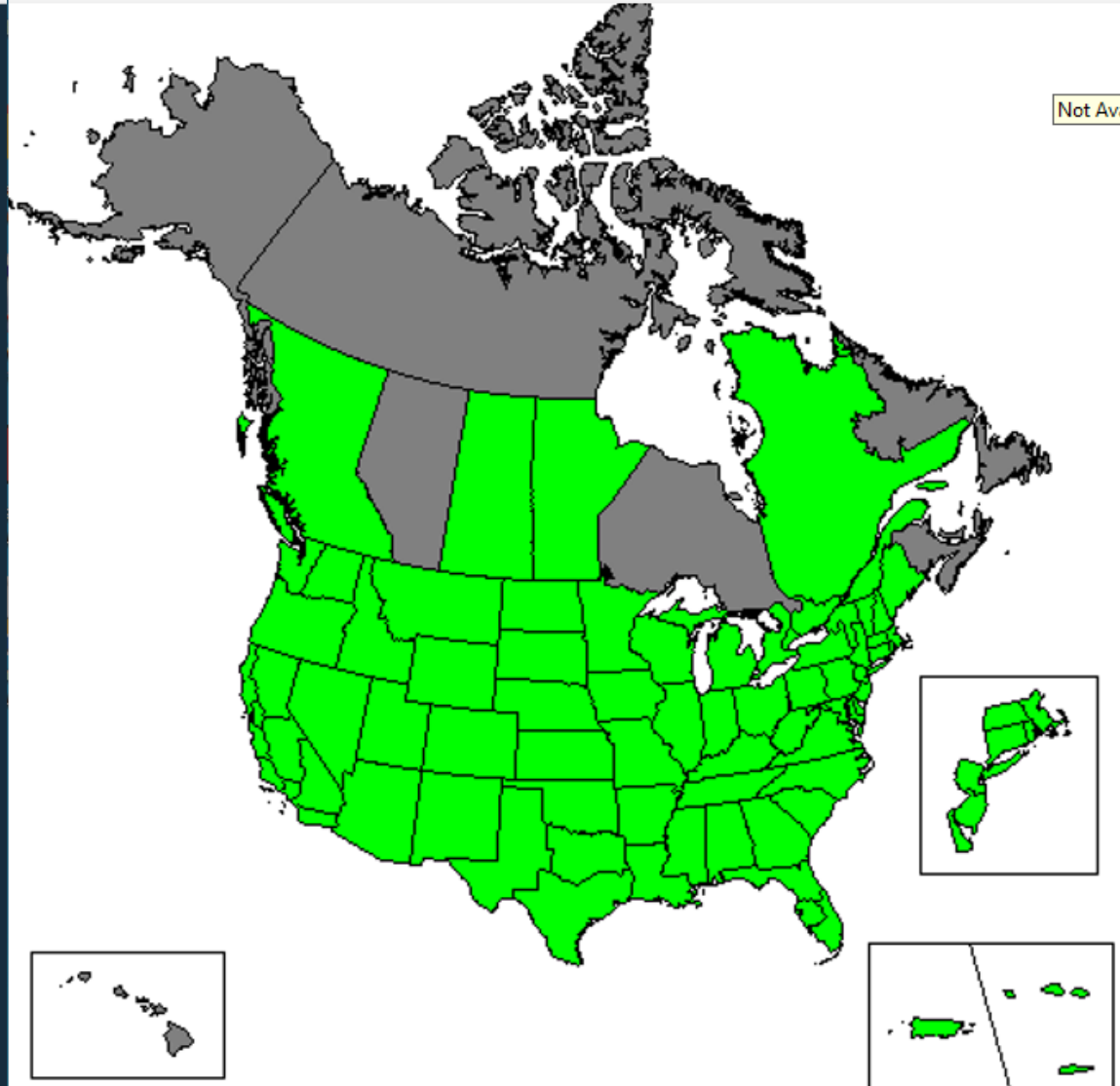


ARRL Sections (continued)

- Each section has a unique 2 or 3 letter identifier.
- Examples:
 - ME = Maine
 - EMA = Eastern Massachusetts
 - LAX = Los Angeles
 - WTX = West Texas
 - NFL = Northern Florida
- List can be found at each station and is prominent on most logging software – keeps track of worked sections and ones still needed.



2022 Sections Worked



BONUS POINTS

DON'T JUST STAND
AROUND – WORK ON
THOSE BONUSES!

HERE'S WHY AND HOW:





BONUS POINTS

- 100% Emergency Power – 100 points per transmitter (except GOTA, VHF/UHF and Satellite)
 - Support equipment and peripherals (like computers, lights, etc.) can be on regular commercial power
- Media Publicity – 100 points
- Public Location – 100 points
- Public Information Table – 100 points
- Originating a Message to Section Manager – 100 points.
- Handling Messages – 10 points per, max 100 pts.



BONUS POINTS

- Satellite QSO (just 1) – 100 points
- Demo of Natural Power – 100 points (bicycle generator, solar panel, wind turbine)
 - Need to make 5 contacts minimum
 - Counts as one of the transmitters while in use
 - Includes batteries charged by alternate power (like a solar panel, for example)
- Copying the special FD Bulletin from W1AW. (must be copied over the air) – 100 points



BONUS POINTS

- Site Visit by an invited Elected Government Official – 100 points
- Site Visit by Served Agency – 100 points
- Educational Activity (WINLINK) – 100 points
- Social Media Promotion – 100 points
- Safety Officer – 100 Bonus Points



BONUS POINTS

- Web Submission of Field Day entry – 50 points
- Youth Participation – 20 points for each participant age 18 or younger who completes at least one QSO
 - Max. of 100 points



Basic Field Day Operating Strategies

- Search and Pounce (S&P)
 - You roam around the bands looking for other stations
- Calling CQ
 - You sit on an open frequency and call CQ waiting for others to respond





Example of Phone (Voice) Exchange

- You call: CQ Field Day, CQ Field Day from K4MSU, KILO FOUR MIKE SIERRA UNIFORM
- Someone answers: K4MSU here is November Four Alpha Whiskey Baker
- N4AWB, please copy Three Alpha, KILO YANKEE
- QSL, please copy Four Alpha, South Florida, Four Alpha SFL, over
- QSL, thanks for South Florida and good luck in Field Day. QRZ from KILO FOUR MIKE SIERRA UNIFORM



Phonetics on Phone

- Phone operators must use the ITU Phonetics:
 - A = Alpha
 - B = Bravo
 - C = Charlie
 - D = Delta
 - Etc.
- A sheet with a complete list is also at each station

OPERATING HINTS

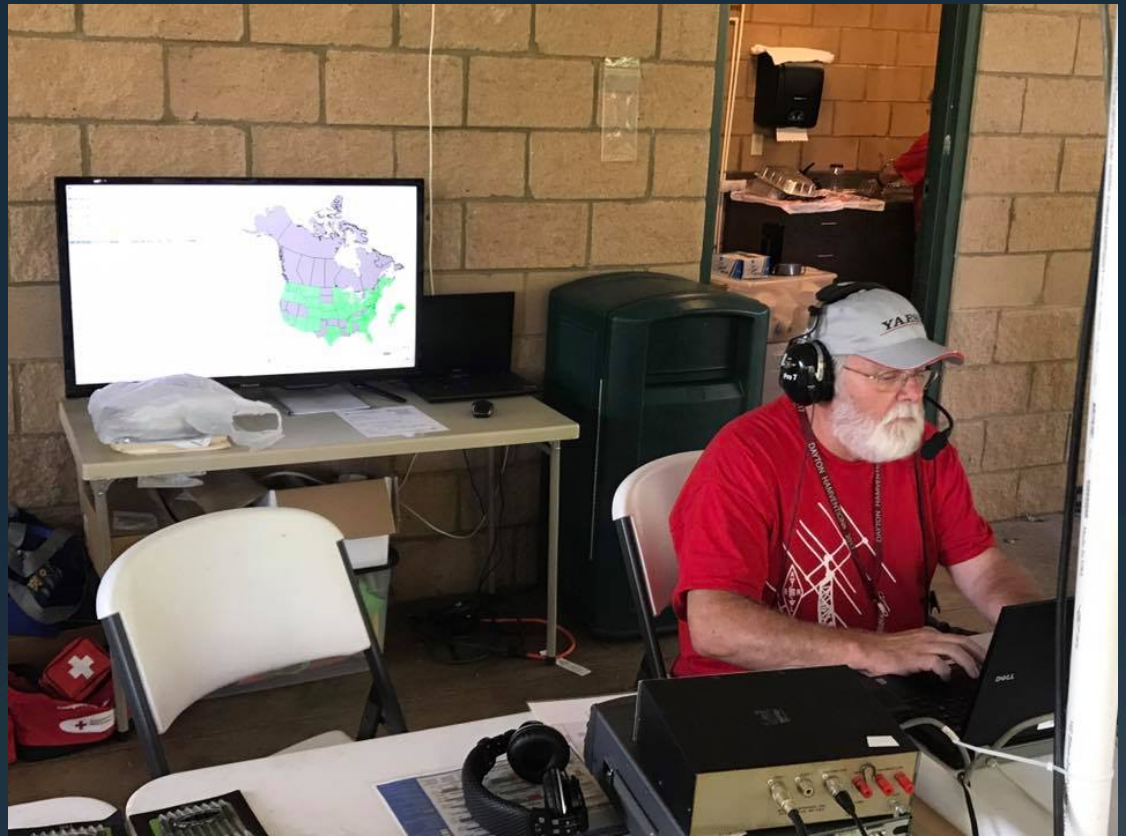
Some good
operating strategies
for Phone, CW and
Digital Modes





Hints for Working Phone

- When Searching and Pouncing, enter calling station's call into the software FIRST, this way you don't waste time calling a Dupe
- Use phonetics for all of the exchange.





Hints for Working Phone

- Don't call at station with a pile up more than just a few of times. This wastes time and you can always come back to them later. Chances are, if they're strong you'll hear them again and, if they're not, they won't hear you anyway.
- Don't be long winded while calling CQ. Call a few times then listen. Call again if no one responds.
- Keep your exchanges short and to the point. If you've been calling CQ, some stations will be impatient and leave before they call you if you're going on about the weather and other stuff while they're waiting.



Hints for Working Phone

- Don't be afraid to ask for repeats. If you can't hear them the first time or forget to record it, just say, "Please repeat your... (call sign, section, etc.)" If you still can't make it out, say, "Just you call, your call please" or "Just your section," etc. That sometimes makes it easier to make out without all the other stuff you don't need and saves time.
- Repeat only if asked.
- Be patient – Many new operators on during Field Day



Field Day Prep Day

- Field Day Prep is a great opportunity for newer hams (and older ones too) to get some experience with our logging software.
- It's also an opportunity for us to test our equipment before Field Day, and give us a final "to-do" list
- This year, our Field Day Prep Day is:
 - June 17th @ 1:00 PM at the Club Station



But Most Importantly...

HAVE FUN!!